


shaw contract group®

carpet for healthcare

**DESIGN IS  
HEALING**



**YOU NEED** a floor covering that's durable, easy to maintain and promotes healing.

**WE DESIGN** carpet that's as beautiful to look at, as it is functional underfoot, withstanding the demands of healthcare environments while soothing and comforting patients, visitors and staff. Design is healing.

4

EVIDENCE-BASED  
DESIGN

10

COMFORT

16

PERFORMANCE

26

INDOOR  
ENVIRONMENTS

32

SUSTAINABILITY



## CARPET FOR HEALTHCARE: EVIDENCE-BASED DESIGN

**YOU NEED** floor covering designed around the specific considerations of healthcare and supported by credible research and data.

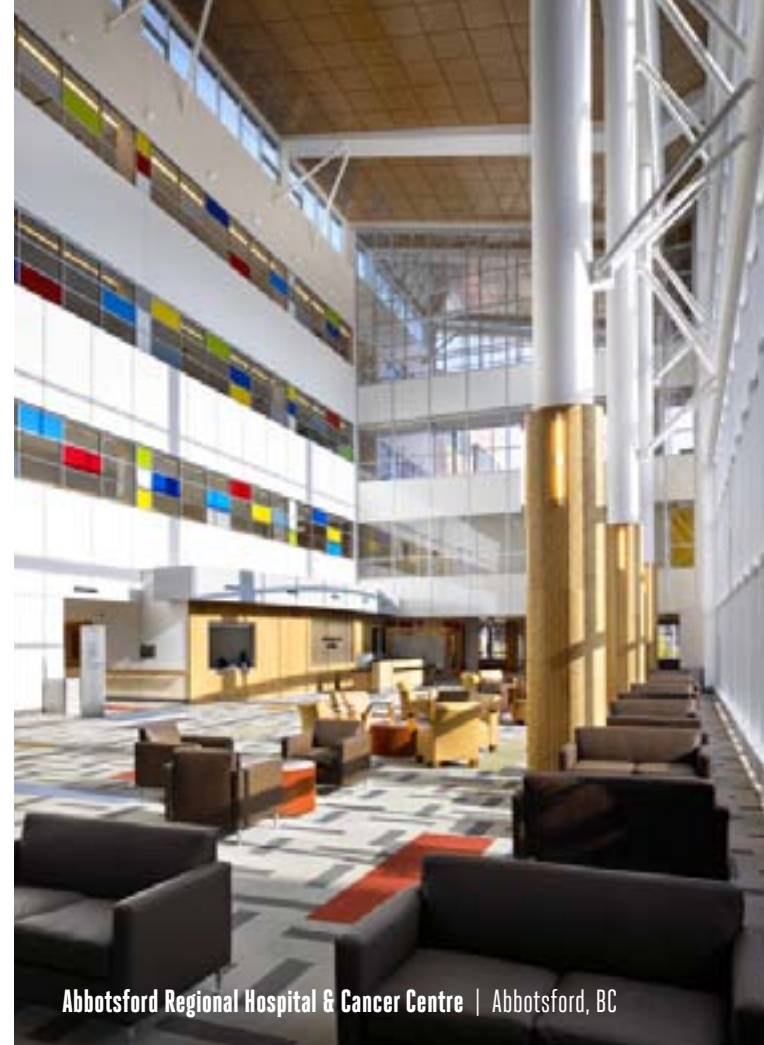
**WE DESIGN** carpet and hard surface solutions through evidence-based design that transform healing spaces and encourage the best possible outcomes for patients, providers and facilities.

# EVIDENCE-BASED DESIGN: BETTER HEALING BY DESIGN.

The objective of care provider and patient is one in the same: to heal. And the design of a healthcare facility profoundly impacts the healing process. Its physical environment has tremendous influence on quality of care, staff retention, operational efficiency and productivity, as well as patient and resident health and well-being.

Through evidence-based design, decisions about every aspect of the built environment—from grand-scale architecture, right down to the nylon in the carpet—are based upon credible research to achieve the best possible outcomes.

Shaw Contract Group incorporates the theories of evidence-based design. We look at the healthcare facility through the eyes of patients, residents, visitors and staff. Then we design accordingly, crafting durable product collections to enhance healing environments making medical facilities feel less institutional and more hospitable.



Abbotsford Regional Hospital & Cancer Centre | Abbotsford, BC



BryanLGH - Women's and Children's Health Institute | Lincoln, NE



Warroad Senior Living | Warroad, MN



Hong Kong Sanatorium and Hospital | Hong Kong, China

## FLOOR COVERING FOR MORE HEALING SPACES.

Because the needs of healthcare spaces vary by segment, we design floor covering to suit the unique demands of every facility type within the marketplace. Our durable carpet and hard surface products cover ground in acute care hospitals, extended care settings, senior living communities, medical campuses and physician-owned buildings.

### NEED TO KNOW:

Working with Shaw Contract Group, you'll have access to both carpet and hard surface. So you can mix and match within your space. Carpet and hardwood for lobbies and administrative offices, ceramic tile and laminate down the halls and inside exam rooms. One source, many commercial flooring solutions.

## INSIDE OUR HEALTHCARE DESIGN STUDIO.

Our healthcare design studio observes trends across healthcare markets and uses research and evidence-based design to drive the development of new products. Our understanding of the stress and expectations placed on your floor motivates our comprehensive approach to design.

### MINDFUL SHADES

Color adds visual warmth while influencing emotions, sleep and wakefulness, creating more than just aesthetic value. Certain patients view color differently—bright, playful colors work well for pediatric applications, while more subtle hues may be more appropriate in senior living environments.

### PATTERNED WITH PURPOSE

Application is critical. Our healthcare products are often targeted for use in a specific environment because pattern design affects some patients differently. High-contrast colors combined with strong graphic patterns may be visually disorienting to some patients, creating feelings of confusion, unsteadiness or instability. Free-flowing, organic patterns contribute to feelings of well-being and reduce uneasiness, while hiding soil in high-traffic areas.

### DEDICATED DURABILITY

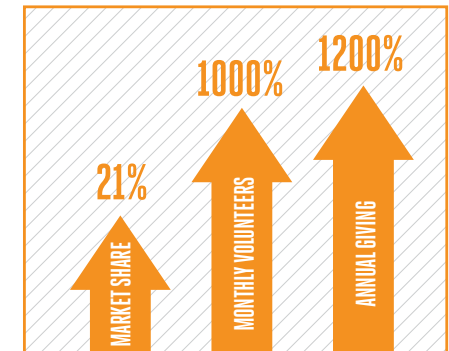
A high-performance carpet protects patients and your investment. We take great care in delivering products that are designed to withstand heavy foot and rolling traffic. With low pile heights, dense construction, high-stitch rates and other factors, high performance takes on a beautiful, award-winning aesthetic, enhancing any interior environment.

## TRANSFORM SPACE. AND MARKET SHARE.

Another outcome of strategic, thoughtful design is marketability—to care providers, patients and the community. Well-designed healing spaces have shown increases in market share, patient satisfaction, annual giving, and staff recruitment and retention. What's good for your healing space is also good for your bottom line.

### WELL-DESIGNED OUTCOME

From concept to completion, Hasbro Children's Hospital in Providence, Rhode Island, employed the principles of evidence-based design. The successful outcome of this thoughtfully designed, ground-breaking children's hospital was measurable within the first four years.



The Center for Health Design, Hospital Administrator: What Good Strategic Design Can Do, [http://www.healthdesign.org/resources/stories/strat\\_design.php](http://www.healthdesign.org/resources/stories/strat_design.php)





## CARPET FOR HEALTHCARE: COMFORT

**YOU NEED** a floor covering for your healing space that provides comfort and confidence for all inhabitants.

**WE DESIGN** carpet that reduces leg and eye fatigue, absorbs sound and encourages patient mobility and socialization.



## LEG FATIGUE: LONG-STANDING COMFORT FOR LONG SHIFTS ON FOOT.

Ask any nurse, doctor or attendant and they'll tell you that sore feet and tired, achy legs are part of the job. A carpeted floor softens each step, improves posture and increases overall comfort levels for medical professionals. All of which can help boost staff productivity, a real comfort for administrators.

*Redfern MS, Cham R: "The influence of flooring on standing comfort and fatigue," American Industrial Hygiene Association Journal, vol. 61, no. 5, pp. 700-708, September - October 2000.*

*Madeleine, P., Voigt, M., and Arendt-Nielsen, L., Subjective, Physiological and Biomechanical Responses to Prolonged Manual Work Performed Standing on Hard and Soft Surfaces, Eur. J. Appl. Physiol. 77, 1-9 (1998).*

## GLARE REDUCTION: SHINY IS NOT NECESSARILY BETTER.

Avoiding glare is important to every inhabitant of a healing space. For medical professionals, it distracts and causes eye fatigue. For the very young and elderly, it creates visual discomfort and may appear wet or slick, causing patient confusion. Carpet absorbs light and cuts down glare, easing eye stress and patient anxieties.

*S.C. Reznikoff, Specifications for Commercial Interiors: Professional Liabilities, Regulations and Performance Criteria (Watson-Guptill; revised edition, 1989), 115.*

## SOCIALIZATION AND MOBILITY: FEEL FREE TO MOVE ABOUT THE CARPET.

As leaders in design for the aging will attest, a carpeted path helps create a setting where patients feel free to explore and interact. It lends itself to a warmer, more residential quality that's inviting for residents, family and friends. Carpet also eliminates glare and boosts patient confidence about footing, encouraging exploration, movement and social interaction. So those first post-procedure steps are steadied, signifying healing progress to patients and their caregivers.

### NEED TO KNOW:

**"Socialization is the heart of what keeps people alive and enjoying their lives. It's the social contact with others that contributes to a positive self-image, a sense of fulfillment and an improved quality of life."** – Elizabeth Brawley

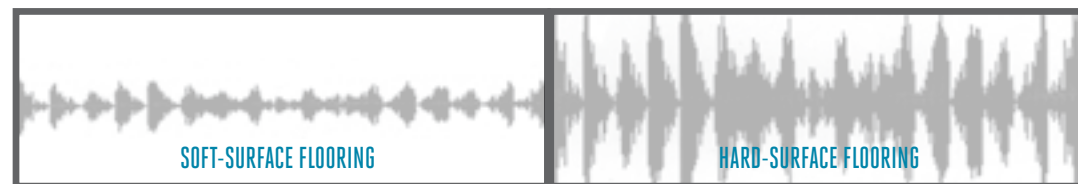
*Elizabeth C. Brawley, Designing for Alzheimer's Disease: Strategies for Creating Better Care Environments (Wiley Series in Healthcare and Senior Living Design) (Wiley, 1997)*

## IMPROVED ACOUSTICS: A QUIETER PLACE TO CARE, A MORE PEACEFUL PLACE TO HEAL.

One study conducted by the Mayo Clinic measured noise levels at 113 decibels during the 7:00 a.m. nursing shift change. That's the acoustic equivalent of a jackhammer. One of the recommendations for noise reduction—carpet the floors.

In acute and extended care facilities where quiet is essential for patient recovery and staff concentration, calm is hard to come by. The same technological advances that improve healthcare also add to the excessive noise. Compounding the poor soundscape are HVAC systems, hallway conversations, equipment shuffling, heart rate monitors and intercom announcements. The sound-absorbing properties of carpet support systemic measures for improving the sound environment while enhancing the physical space.

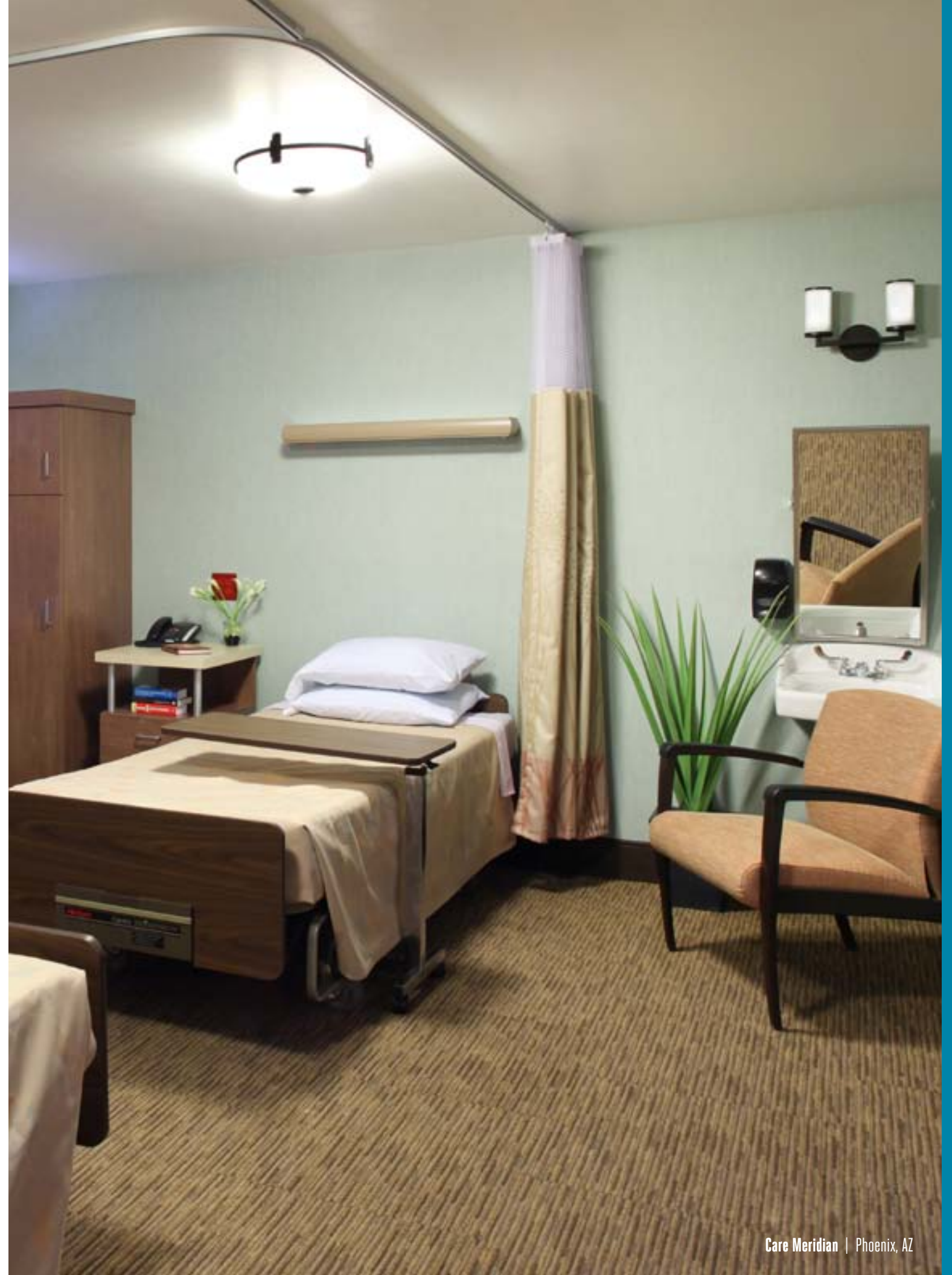
### SOUND WAVE REDUCTION CARPET VS. HARD SURFACE



#### NEED TO KNOW:

While hard surface flooring amplifies and projects sound, **carpet absorbs it ten times more efficiently.** Which contributes to a quieter, calmer, more healing environment.

Cheryl Ann Cmiel BSN, RN, Dana Marie Karr BSN, RN, et al., "Noise Control: A Nursing Team's Approach to Sleep Promotion," 2004. American Society of Interior Designers, "Sound Solutions," 2005.





## CARPET FOR HEALTHCARE: PERFORMANCE

**YOU NEED** durable, low-maintenance flooring with long-term staying power.

**WE DESIGN** durable carpet for intense conditions that's easier and less expensive to maintain than other flooring choices.

# BACKING: DURABLE CARPET BEGINS AT THE BACKING.

You may never lay eyes or feet directly upon it, but a carpet's backing is vital to its appearance and performance. And our backings stay strong, even under the extreme conditions of healing spaces where spills and bacteria concerns warrant extra protection.

Both EcoWorx® and TekLok® high-performance backing systems are made from non-PVC materials, are low VOC and come with lifetime commercial warranties. Even better, EcoWorx performance broadloom forms an impermeable moisture barrier. And like all EcoWorx products, it's fully cradle to cradle and backed with an environmental guarantee—all at no extra cost.

**NEED TO KNOW:** Seven of the largest healthcare purchasing organizations include EcoWorx in their contracts.



Saratoga Surgery Center - Specialty Physicians Offices | Wilton, NY

|  | WIDTH/SIZE | MOISTURE BARRIER | LIFETIME COMMERCIAL WARRANTY | ENVIRONMENTAL GUARANTEE | ENVIRONMENTAL   | FEATURES  |
|--|------------|------------------|------------------------------|-------------------------|---|---|
| <b>eco•worx®</b> tile                  | 24 in.     |                  | ●                            | ●                       | <ul style="list-style-type: none"> <li>• Cradle to Cradle Silver Certified</li> <li>• NSF 140 Platinum</li> <li>• Green Label Plus</li> <li>• 40% recycled content</li> </ul> | <ul style="list-style-type: none"> <li>• 40% lighter in weight than traditional carpet tile backing</li> <li>• 8x the tear strength, 5x the tensile strength and 2x the delamination strength of traditional tile backing</li> <li>• Antimicrobial properties: passes AATCC 174</li> <li>• High tuft bind, edge ravel and delamination strength</li> </ul>  |
| <b>eco•worx®</b> performance broadloom | 12 ft.     | ●                | ●                            | ●                       | <ul style="list-style-type: none"> <li>• Cradle to Cradle Silver Certified</li> <li>• NSF 140 Platinum</li> <li>• Green Label Plus</li> <li>• 20% recycled content</li> </ul> | <ul style="list-style-type: none"> <li>• Lighter and more flexible than traditional high-performance backing</li> <li>• Superior performance to a 6-foot backing with fewer seams</li> <li>• Provides moisture barrier, including seam</li> <li>• Antimicrobial properties available. Passes AATCC 174 with the use of Shaw 3600 adhesive.</li> <li>• High tuft bind, edge ravel and delamination strength</li> </ul> |
| <b>TekLok®</b>                         | 12 ft.     |                  | ●                            |                         | <ul style="list-style-type: none"> <li>• NSF 140 Gold</li> <li>• Green Label Plus</li> </ul>  | <ul style="list-style-type: none"> <li>• Antimicrobial properties: passes AATCC 174</li> <li>• High tuft bind, edge ravel and delamination strength</li> </ul>  |

# FACE FIBER: EXAMINING WHAT'S ON TOP.

Both Eco Solution Q® and Solution Q Extreme® look good, act tough and last long. But their true beauty runs deeper than durability and aesthetics. That's because Shaw is more than a carpet manufacturer. And our carpet is more than just another carpet.

Created through a series of strategic acquisitions, we are the largest carpet fiber manufacturer in the world. Our fiber division consists of the capital and intellectual assets of BASF, Honeywell, Allied Signal and Amoco's former carpet fiber divisions. So our understanding of the demands placed on commercial carpet is unparalleled.

By controlling every aspect of the manufacturing process from yarn extrusion and fiber construction, to high-performance tufting and backing, we produce the best carpet systems for healthcare environments. does that make us control freaks? Absolutely.

**NEED TO KNOW:** Our durable, sustainable, superior face fiber is produced using less energy, less waste and less raw material, **leaving less environmental footprint in its wake.**




|  | FIBER TYPE     | REMOVAL OF ACID-BASED STAINS | WARRANTY   | ENVIRONMENTAL  | APPLICATIONS  | COLORS    |
|--|----------------|------------------------------|--|--|---|-----------|
| <b>eco solution Q</b><br>YARN DYED     | Nylon          | Water with detergent         | Lifetime limited static and abrasive wear                                | <ul style="list-style-type: none"> <li>• Cradle to Cradle Silver Certified</li> <li>• Green Label Plus</li> <li>• 25% recycled content*</li> <li>• Fully recyclable through Shaw Evergreen Nylon Recycling Facility</li> </ul> | Environments with spills and limited exposure to harsh chemicals  | Unlimited |
| <b>eco solution Q</b><br>SOLUTION DYED | Nylon          | Water with detergent         | Lifetime limited stain, colorfastness to light, static and abrasive wear | <ul style="list-style-type: none"> <li>• Cradle to Cradle Silver Certified</li> <li>• Green Label Plus</li> <li>• 25% recycled content*</li> <li>• Fully recyclable through Shaw Evergreen Nylon Recycling Facility</li> </ul> | Environments with frequent spills and exposure to harsh chemicals | 200+      |
| <b>solution Q</b><br>EXTREME           | Cationic Nylon | Water                        | Lifetime limited stain, colorfastness to light, static and abrasive wear | <ul style="list-style-type: none"> <li>• Cradle to Cradle Silver Certified</li> <li>• Green Label Plus</li> <li>• Fully recyclable through Shaw Evergreen Nylon Recycling Facility</li> </ul>                                  | Environments with frequent spills and exposure to harsh chemicals | 50        |

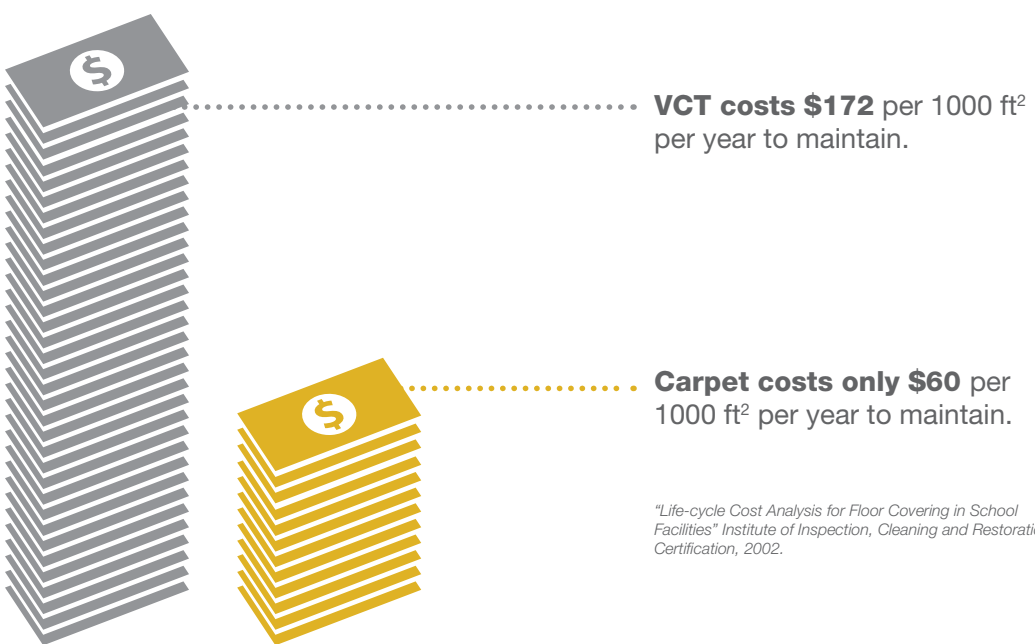
\* Calculated through system allocation based on allocated output of recycled fiber from Shaw's total nylon production calculated as a percent of total Eco Solution Q Nylon fiber output.

# LIFE-CYCLE COSTS: COMPARED TO HARD SURFACE, CARPET IS WELL WORTH THE INVESTMENT.

Carpet specified for healthcare facilities must meet the highest performance standards. And our products are designed to endure the most intense conditions, withstanding long-term wear, resisting stains and maintaining its appearance. Factor in ease of installation and maintenance, and it's a far more cost-effective solution than hard surface.

 **Vinyl Composition Tile (VCT) requires 173 hours of cleaning** per 1000 ft<sup>2</sup> per year to maintain.

 **Carpet requires only 62 hours of cleaning** per 1000 ft<sup>2</sup> per year to maintain.



"Life-cycle Cost Analysis for Floor Covering in School Facilities" Institute of Inspection, Cleaning and Restoration Certification, 2002.

**NEED TO KNOW:** Cost of ownership equals initial cost, maintenance over the life of the carpet and eventual disposal cost.





## MAINTENANCE: TO PRESERVE AND PROTECT YOUR INVESTMENT.

Appearance retention begins with selecting the right carpet for the right space. Lobbies, nurses’ stations, waiting areas—they all have different traffic patterns and performance needs. Shaw Contract Group has products engineered to meet those requirements.

And we’ll help you establish a well-planned maintenance schedule, as well as train your staff on proper care methods. Together with preventative measures like walk-off mats and tiles near entry ways, your carpet will retain its appearance longer and extend its useful life, saving on replacement costs and facility downtime.

### SHAW R2X IS TOUGH ON SPILLS. AND TOUGHER ON ODOR.

Bodily fluids find their way to facility floors everyday. R2X cleaning agent tackles them on two levels, fighting stains and attacking odor-causing enzymes—even between applications.

### SUGGESTED CLEANING FREQUENCIES BY TRAFFIC LEVEL

| TRAFFIC LEVEL  | VACUUM            | SPOT REMOVAL | HOT WATER EXTRACTION |
|--|-------------------|--------------|----------------------|
| <b>light:</b> <ul style="list-style-type: none"> <li>• private offices</li> <li>• cubicles</li> </ul>  | 2+ times per week | as needed    | 1 time per year      |
| <b>medium:</b> <ul style="list-style-type: none"> <li>• shared offices</li> <li>• interior hallways</li> <li>• conference rooms</li> </ul>   | 1+ times per day  | as needed    | 2 times per year     |
| <b>heavy:</b> <ul style="list-style-type: none"> <li>• general entrances</li> <li>• elevators</li> <li>• main hallways</li> <li>• break rooms</li> <li>• work rooms</li> <li>• mail rooms</li> <li>• patient rooms</li> <li>• waiting rooms</li> </ul> | 1+ times per day  | as needed    | 4 times per year     |
| <b>severe:</b> <ul style="list-style-type: none"> <li>• general entrances in severe climates</li> <li>• hospital entrances</li> <li>• cafeterias</li> </ul>  | 1+ times per day  | as needed    | 12+ times per year   |

**NEED TO KNOW:** Get industry-leading maintenance and training with the **M.A.C. Advantage**, our exclusive online learning maintenance system specifically designed for facility professionals. For more details, visit [www.shawcleanfloors.com](http://www.shawcleanfloors.com) or contact your Shaw Contract Group sales representative.



## CARPET FOR HEALTHCARE: INDOOR ENVIRONMENTS

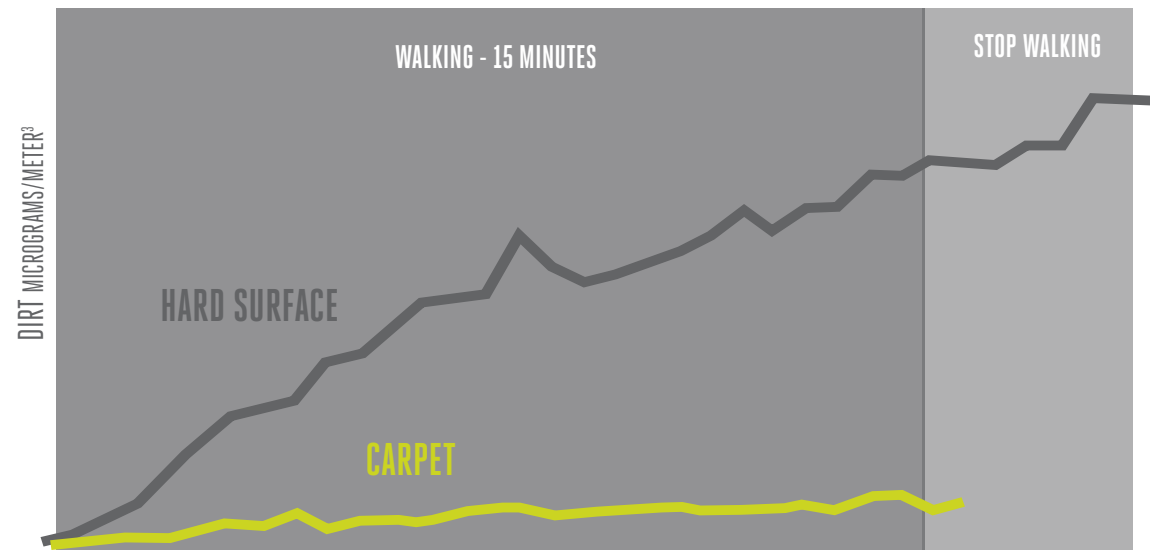
**YOU NEED** a floor covering that creates a better environment for patients, residents and staff.

**WE DESIGN** carpet solutions that improve indoor air quality, inhibit microorganism growth and lessen the frequency and severity of slips and falls.

# INDOOR AIR QUALITY: CLEAN CARPET. CLEANER AIR.

Inside healthcare facilities, airborne particulates are released through everyday foot and roller traffic. And while hard surface floors allow allergens to be kicked up into the breathing zone, carpet improves indoor air quality by holding the pollutants in its face fiber until they are later vacuumed away. Like an air filter, only cleaner.

## FOOT TRAFFIC EMISSIONS: CARPET REDUCES DUST IN THE AIR



The peak concentration of dust and dirt in the air in the room with hard surface flooring was 943.4 micrograms/meter<sup>3</sup>. This level is 8.9 times the peak level seen on a carpeted surface.

*Asbury, G. Cleaning and Foot Traffic Emissions Analysis. Test Number 0072198. Professional Testing Laboratory, Inc., Dalton, GA. unpublished data. 16 pages. May, 2002.*

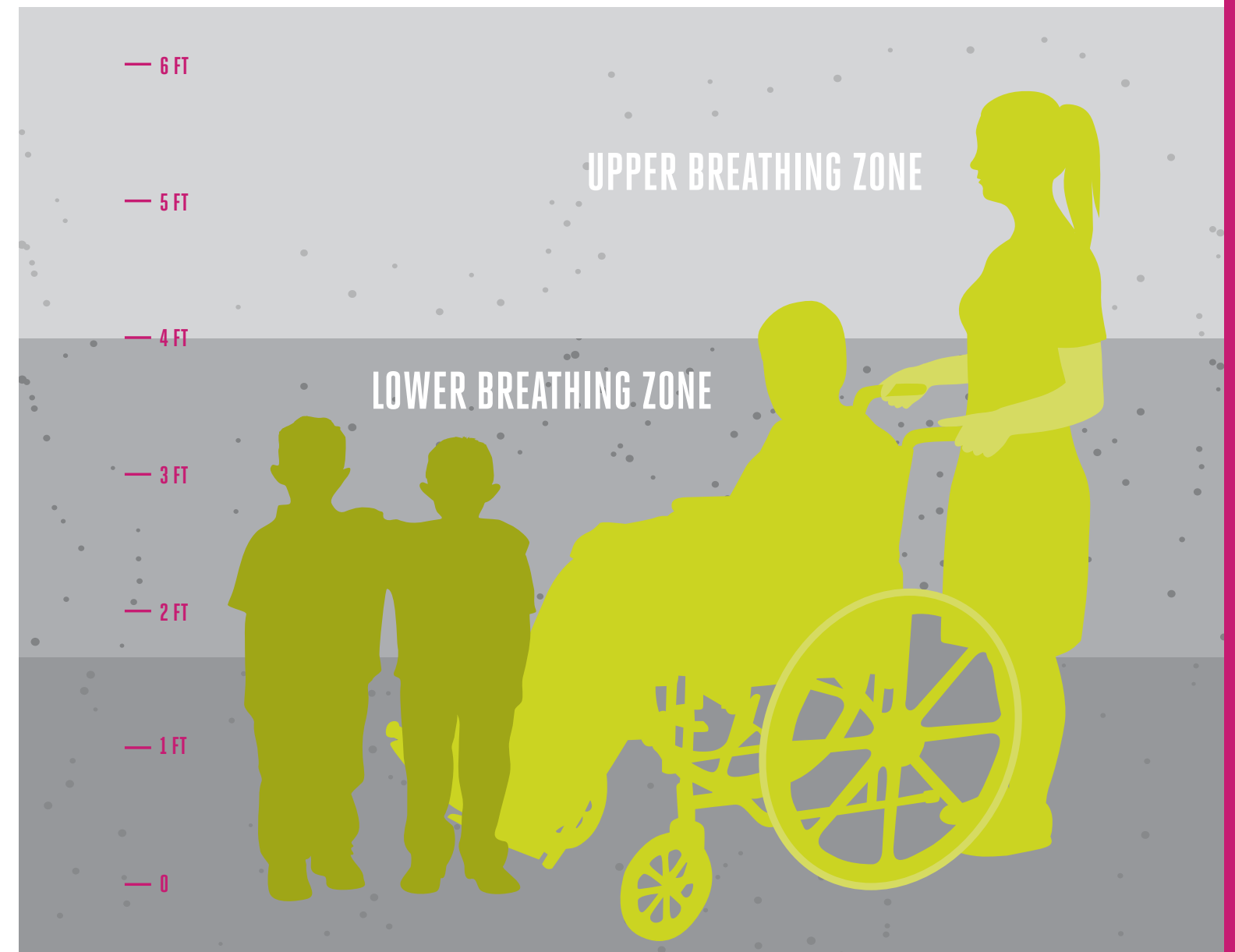
**NEED TO KNOW:** Carpet is one of the lowest emitters of volatile organic compounds (VOCs) among building materials. And all of our carpet products are **CRI Green Label or Green Label Plus certified.**



## CARPET THE FLOOR. NOW BREATHE EASIER.

The breathing zone for children in pediatrics and patients in wheelchairs is lower than that of a standing adult, making them especially susceptible to airborne particulates as they move about the floor. Carpet helps clear the air.

## CARPET LESSENS AIRBORNE POLLUTANTS FOR THOSE MOST VULNERABLE

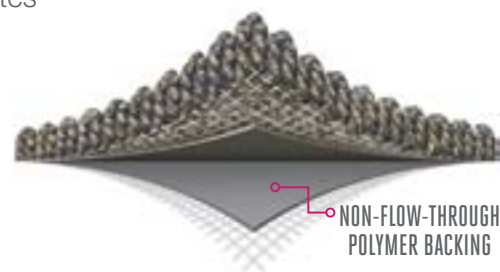


*Cicciarelli, Bradley A. CFD Analysis of the Behavior of Airborne Allergens in Carpeted and Uncarpeted Dwellings. Solutia, Inc., Cantonment, FL. 2002.*

## MOISTURE CONTROL: THE IMPERMEABLE BARRIER BELOW.

With the frequency of accidental spills, incontinence and rigorous cleaning in healthcare settings, seepage can lead to trapped moisture beneath the flooring system, promoting infection and fostering mold and mildew buildup.

But EcoWorx performance broadloom eliminates the problem with a non-flow-through polymer backing that prevents moisture from ever reaching the subfloor. And because the seams are mechanically welded together at installation, fluids stay on the surface for more thorough cleanup.



## ANTIMICROBIAL PROTECTION: ECOWORX® WORKS HARD AGAINST HARMFUL MICROORGANISMS.

Fungi, bacteria and mold are equal opportunity microorganisms, thriving on both damp hard and soft surfaces. Yet according to the Centers for Disease Control (CDC), carpet shows no greater bacterial or fungal growth than hard surface.

Choosing carpet system with antimicrobial properties can further inhibit the growth of harmful bacteria and fungi. Passing AATCC Test Method 174, EcoWorx tile and performance broadloom backings offer antimicrobial protection by creating a zone of inhibition.\*

\*EcoWorx Performance Broadloom passes AATCC 174 when installed with Shaw 3600 adhesive.  
Centers for Disease Control Guidelines/Healthcare Interiors

## SLIP AND FALL PREVENTION: SAFETY STARTS ON STEADY GROUND.

In studies conducted by the Occupational Safety and Health Administration (OSHA), falling on hard surface flooring increases fracture risk approximately twofold over a carpeted surface. And with more than 13% of all falls occurring in healthcare facilities, reducing the hazard of falling is especially important where patients and residents may be unsteady on their feet. Carpet provides traction that can help prevent slips and cushion falls, putting minds and bodies at ease.

### NEED TO KNOW:

More than **90% of all hip fractures** are caused by falling onto hard surfaces.

Healthcare Facility Research Consortium; Centers for Disease Control (CDC); Occupational Safety and Health Administration (OSHA)





## CARPET FOR HEALTHCARE: SUSTAINABILITY

**YOU NEED** carpet that's as environmentally responsible as it is durable.

**WE DESIGN** non-PVC, LEED-qualified carpet that's durable for demanding indoor environments and cradle to cradle for the one outside.

# CRADLE TO CRADLE: ABUNDANTLY HEALING.

Eco Solution Q®, Solution Q Extreme® and EcoWorx® are Cradle to Cradle Silver Certified, a rigorous third party accreditation that maximizes material value, eliminates waste and creates abundance. Manufactured in a closed-loop process, every square yard of carpet made from these sustainable ingredients is fully recyclable back into more carpet.

### WHY SPECIFY CRADLE TO CRADLE?

Cradle to Cradle Certification through McDonough Braungart Design Chemistry (MBDC) provides a company with a means to tangibly and credibly measure achievement in environmentally intelligent design and helps customers purchase and specify products that satisfy a broader definition of quality.



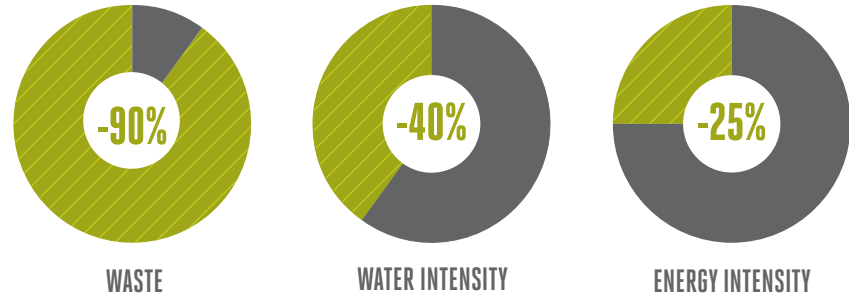
Cradle to Cradle Certification addresses:

- safe and healthy materials
- design for material reutilization such as recycling or composting
- the use of renewable energy and energy efficiency
- efficient use of water and maximum water quality
- associated with production instituting strategies for social responsibility

**NEED TO KNOW:** Assessed down to 100 ppm, the MBDC Cradle to Cradle design protocol ensures safer products for people and the planet. To put that into perspective, the Consumer Product Safety Commission allows paint to be labeled “lead-free” even if it contains 600 ppm of lead.

### OUR EVER-SHRINKING ENVIRONMENTAL FOOTPRINT

We are committed to reduce our waste to landfill by 90% by 2011 year-end, reduce water intensity by 40% by 2016 and reduce energy intensity by 25% by 2017.



## RECLAMATION: ECOWORX® CARPET RECOVERY. WE WANT IT BACK.

That EcoWorx carpet in your healing space? When you've finished with it, call us and we'll come and get it. We'll take back our backing to the EcoWorx Recovery Technology Facility in Cartersville, Georgia, and turn it into more backing. No charge.

Carpet not backed by EcoWorx is also returnable. As a matter of fact, we'll recycle any type of carpet—regardless of manufacturer.\*

\*Some costs may apply. Contact your Shaw Contract Group sales representative for details.

### ENVIRONMENTAL GUARANTEE:

When any EcoWorx-backed product has reached the end of its useful life, Shaw will pick it up and recycle it into more EcoWorx.

**Continental U.S. and Canada Guarantee:** Shaw will take back 500 yards or greater of EcoWorx material at no cost to you.

**Alaska, Hawaii, other U.S. Territories and Mexico Guarantee:** Shaw will take back 5,000 yards or greater of EcoWorx material at no cost to you.

**International Guarantee:** Shaw will take back 5,000 yards or greater of EcoWorx material from any international port at no cost to you.

## RECYCLING: TAKING CARE TO STAY SUSTAINABLE.

### EVERGREEN

Once reclaimed, type 6 nylon can be recycled at our Evergreen Nylon Recycling Facility in Augusta, Georgia. There, the old carpet is turned into material for new nylon 6, clean energy and recycled content for EcoWorx.

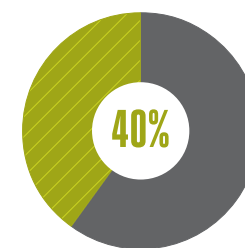
### CARPET-TO-ENERGY

Operational in 2010, our new Reclaim-to-Energy (Re2E) facility has the capacity to convert 84 million pounds annually of reclaimed, post-consumer carpet into steam used to provide power to two of our carpet manufacturing facilities at the rate of 50 thousand pounds of steam per hour.

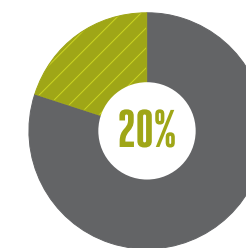
At another of our plants, we've replaced our fossil fuel boiler with a facility that turns approximately 36 million pounds of pre-consumer carpet and wood manufacturing by-products into steam energy, saving us a million dollars a year. Created in partnership with Siemens Building Technologies in 2005, it's the first gasification, alternative fuel-to-energy facility in the carpet industry.

### RECYCLED CONTENT

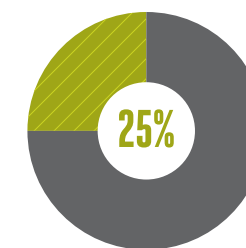
Through our use of recycled content, we use 85% less oil equivalence than processing nylon from completely virgin materials, according to life cycle assessment results.



ECOWORX® TILE  
PRE- AND POST-CONSUMER CONTENT



ECOWORX® PERFORMANCE BROADLOOM  
POST-CONSUMER CONTENT



ECO SOLUTION Q®  
PRE-CONSUMER CONTENT

#### NEED TO KNOW:

Since 2007, Shaw has recycled more carpet than all other carpet manufacturers combined, earning us **multiple Carpet America Recovery Effort (CARE) Recycler of the Year awards.**

ECOWORX

BY SHAW

US PATENT 7,357,971 TO RECYCLE 800-509-SHAW

## WE HAVE SOMETHING ELSE TO CONTRIBUTE TO YOUR HEALING SPACE. LEED CREDIT.

Not only does our carpet contribute to the beauty and functionality of your space, it also contributes to LEED for Healthcare Credits including recycled content, low-emitting materials and innovation in design.

Developed by the United States Green Building Council (USGBC), the LEED for Healthcare Rating System provides guidelines for designing and building environmentally responsible healthcare structures, including inpatient and outpatient care facilities and licensed long term care facilities.



### NEED TO KNOW:

How much credit are we talking? **Visit our online LEED calculator** at [shawcontractgroup.com](http://shawcontractgroup.com) to determine how our products can earn credit toward project certification.

### MATERIALS & RESOURCES

| LEED FOR HEALTHCARE CREDIT   | SHAW CONTRACT GROUP CONTRIBUTION  |
|--|---|
| <b>MR Credit 1.1: Building Reuse</b>   | Reusing existing interior nonstructural elements, including carpet, provides 1 point.   |
| <b>MR Credit 2: Construction Waste Management</b>  | EcoWorx® products are completely recyclable through Shaw Environmental Guarantee program and contribute toward up to 2 points. Shaw will also help facilitate recycling efforts of other carpet products.   |
| <b>MR Credit 3: Sustainably Sourced Materials and Products</b>                                       | Products with recycled content and that are regionally sourced contribute up to 4 points. <ul style="list-style-type: none"> <li>• EcoWorx tile backing contains 40% pre-consumer content.</li> <li>• EcoWorx performance broadloom contains 20% post-consumer recycled content.</li> <li>• Eco Solution Q® nylon fiber contains 25% pre-consumer content.</li> <li>• Projects within 500 miles of Cartersville, Georgia, may apply toward regional material credit.</li> </ul> |
| <b>IEQ Credit 2: Acoustic Environment: Exterior Noise, Acoustical Finishes and Room Noise Levels</b> | Shaw Contract Group carpet helps to reduce footfall impact and cart rolling noise. Using materials that enhance sound absorption can deliver up to 2 points.  |
| <b>ID Credit 1.1: Innovation in Design</b>   | EcoWorx, EcoWorx Broadloom, EcoWorx Performance Broadloom and Eco Solution Q are certified with a Cradle to Cradle Silver rating which contribute toward up to 4 points through the Innovation in Design credit. All EcoWorx backings and EcoLogix® cushioned backing are NSF-140 Platinum Certified. Ultraloc® Pattern backing is certified at the Gold level.   |

### INDOOR ENVIRONMENTAL QUALITY

### INNOVATION IN DESIGN

## YOU NEED:

Floor covering designed around the specific considerations of healthcare and supported by credible research and data.

## WE DESIGN:

Carpet and hard surface solutions through evidence-based design that transform healing spaces and encourage the best possible outcomes for patients, providers and facilities.

A floor covering for your healing space that provides comfort and confidence for all inhabitants.

Carpet that reduces leg and eye fatigue, absorbs sound and encourages patient mobility and socialization.

Durable, low-maintenance flooring with long-term staying power.

Durable carpet for intense conditions that's easier and less expensive to maintain than other flooring choices.

A floor covering that creates a better environment for patients, residents and staff.

Carpet solutions that improve indoor air quality, inhibit microorganism growth and lessen the frequency and severity of slips and falls.

Carpet that's as environmentally responsible as it is durable.

Non-PVC, LEED-qualified carpet that's durable for demanding indoor environments and cradle to cradle for the one outside.

**shaw contract group**<sup>®</sup>

shawcontractgroup.com 877.502.SHAW 410 Old Mill Road Cartersville, GA 30120  
Printed on recycled paper © 2011 Shaw, a Berkshire Hathaway Company SCG-036-NPA